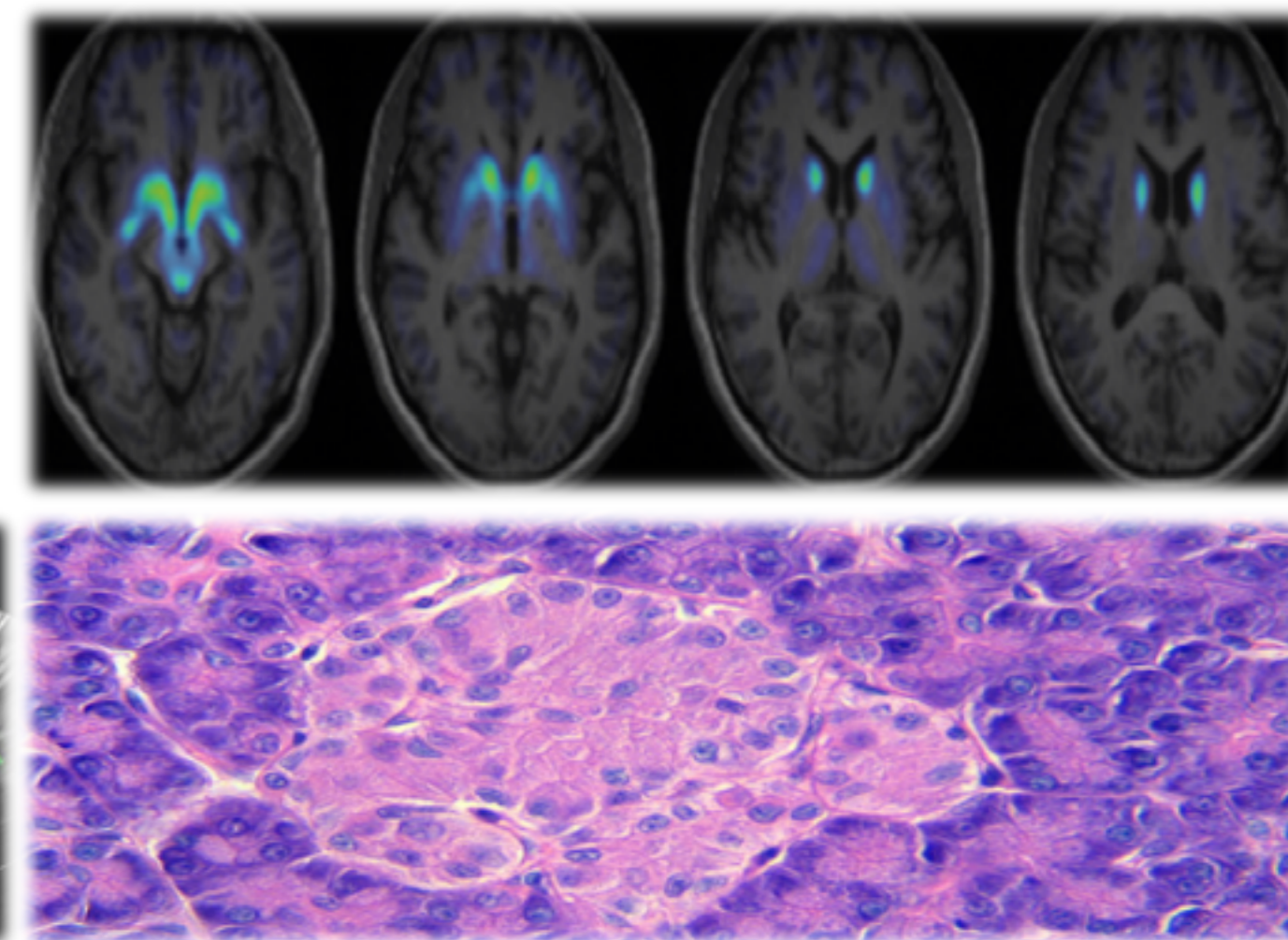
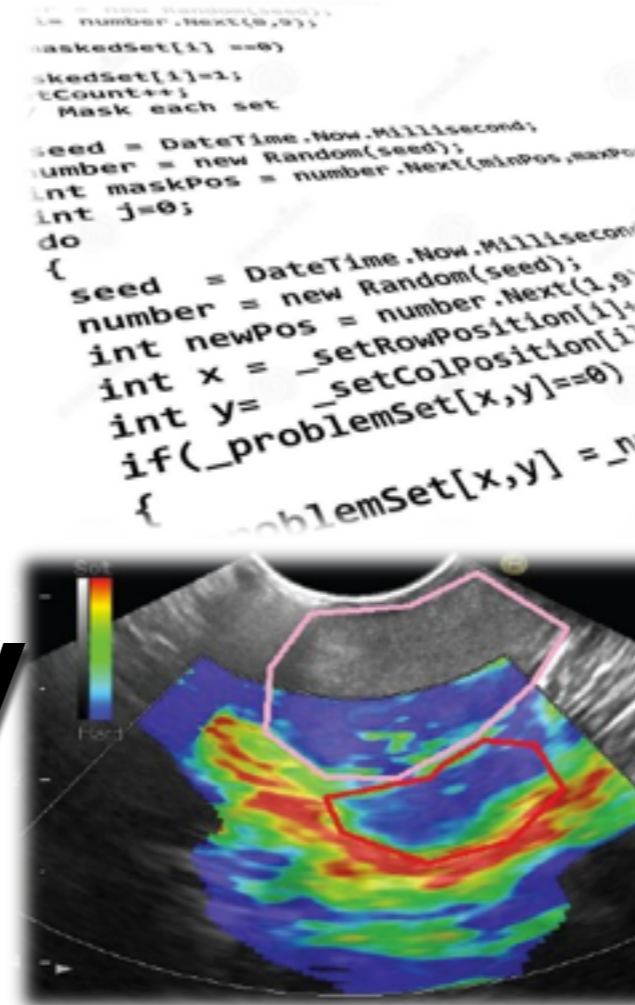


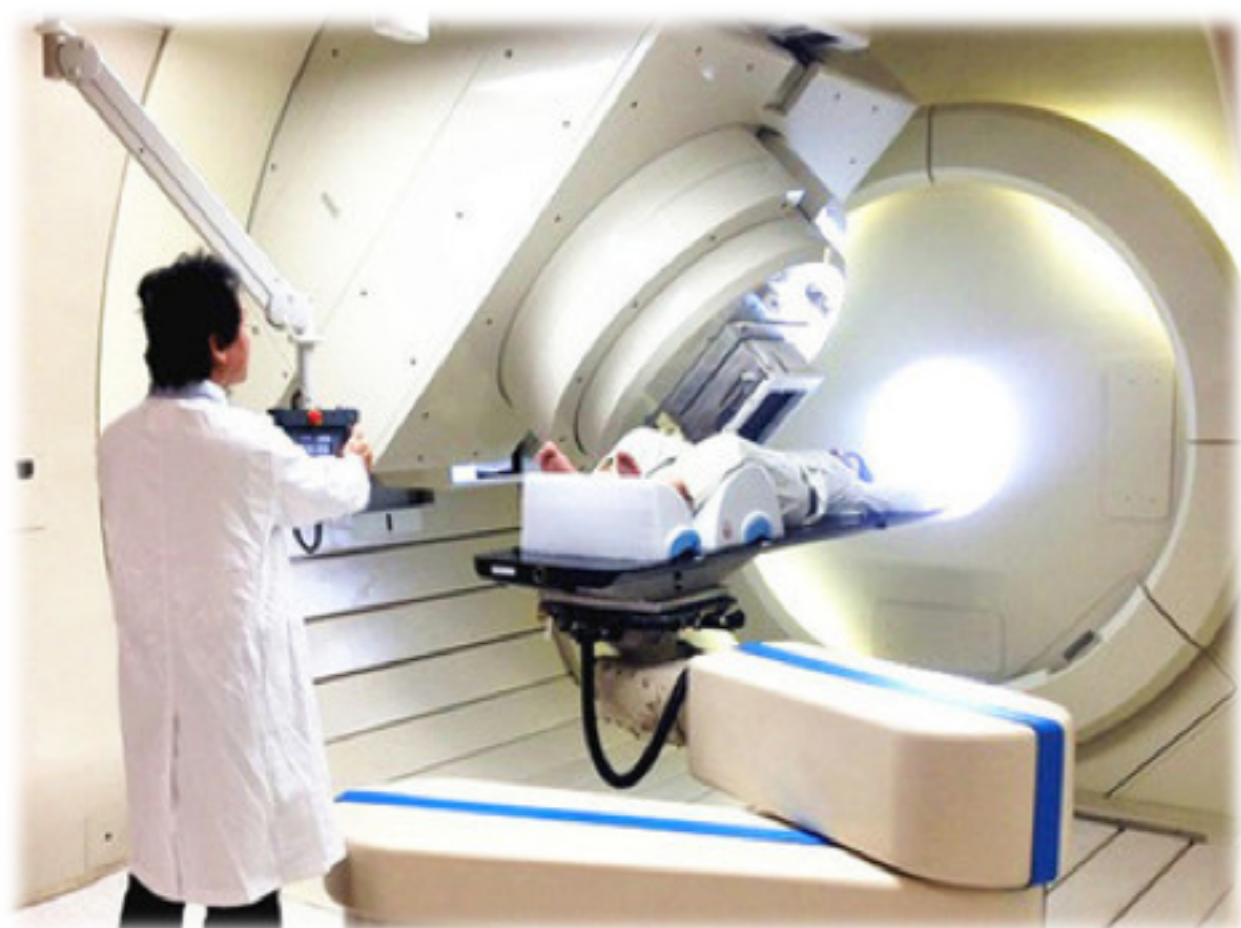


# Department of Medical Imaging and Radiological Sciences Chang Gung University



## Department Facts:

- **Faculty members: 15**
  - 2 MD, 2 MD/PhD, and 11 PhD
  - 4 Prof, 5 Assoc. Prof, 5 Assist. Prof
- **Undergraduate students: ~ 35/yr**
  - 4-yr B.S. program
- **Master's students: 10/yr**
  - 2-yr M.S. program
- **PhD students: 3/yr**



- The department integrates basic science research closely with modern clinical applications.
- The faculty members are highly productive in academic research and have plentiful funding.
- Many top state-of-the-art facilities installed in the associated Chang Gung Memorial Hospital have provided numerous research collaboration opportunities for the department.
- The faculty and graduate students also work closely with physicians in the hospital for solving the most challenging problems of today.



## Perspectives

- Train and prepare future medical technicians, therapists, physicists and scientists with highest quality
- Pioneer research in the areas of medical imaging and radiological sciences
- Promote clinical services and amenities in combining medical research and teaching from clinical and basic sciences toward better healthcare services and integrity.
- Engage and realize teaching environment in the international settings

## Faculty

Name	Position	Research Interests
Yung-Liang Wang, MD	Chairman and Professor	Diagnostic Radiology 、 Ultrasound 、 MRI
Chang-Jong Tung, PhD	Professor	Microdosimetry 、 Medical Physics 、 Medical Health Physics
Jiun-Jie Wang, PhD	Professor	Artifact Correction in MRI and fast sequence imaging, diffusion imaging optimization, function molecular imaging using multi-imaging,
Ing-Tsung Hsiao , PhD	Professor	Medical Image Processing, Neurodegenerative brain imaging PET/SPECT Image System Simulation and Reconstruction
Shiaw-Pyng Wey, PhD	Associate Professor	Radiochemistry 、 Radiopharmaceutical, technical development for cyclotron optimization/test , novel tracer development,
Hui-Yu Tsai, PhD	Associate Professor	Quality assurance and radiation safety for diagnostic imaging facility, radiation dose and image quality assurance in CT
Tsi-Chian Chao, PhD	Associate Professor	Radiation Safety 、 Medical Imaging Processing 、 Radiation Transport and Dosimetry Simulation
Li-Jen Wang, MD	Associate Professor	Radiology of Urinary Tract System 、 Trauma and emergent radiology
Po-Hsiang Tsui, PhD	Associate Professor	Ultrasound Imaging 、 Ultrasonic Scattering 、 Ultrasonic Tissue Characterization
Chung-Chi Lee, PhD	Assistant Professor	Respiration Synchronized Radiation Therapy 、 Dose Verification for Radiation Therapy 、 Particle Radiotherapy
Su-Ju Tu, PhD	Assistant Professor	cone-beam CT 、 Video Detection theory 、 Method for Performing Medical Physics Calculation
Jiun-Jie Wang, MD, PhD	Assistant Professor	Radiobiology 、 Radiation Therapy Technology
Fang-Hsin Chen, PhD	Assistant Professor	radiobiology 、 tumor microenvironment 、 application of anti-angiogenesis drugs to tumor
Yew-Chuen Chang, MD, PhD	Assistant Professor	Nuclear Medicine 、 Molecular Imaging

### PhD

### Master

- Start date:
  - September (fall admission)
  - February (spring Admission)
- Admissions Enquiries and Link
  - Email: [cgu\\_fs@mail.cgu.edu.tw](mailto:cgu_fs@mail.cgu.edu.tw)
  - <http://recruit.cgu.edu.tw/bin/home.php?Lang=en>

- Application date:
  - April (fall admission)
  - October (spring Admission)

- General Enquiries
  - Email: [wen18@cgu.edu.tw](mailto:wen18@cgu.edu.tw)

